



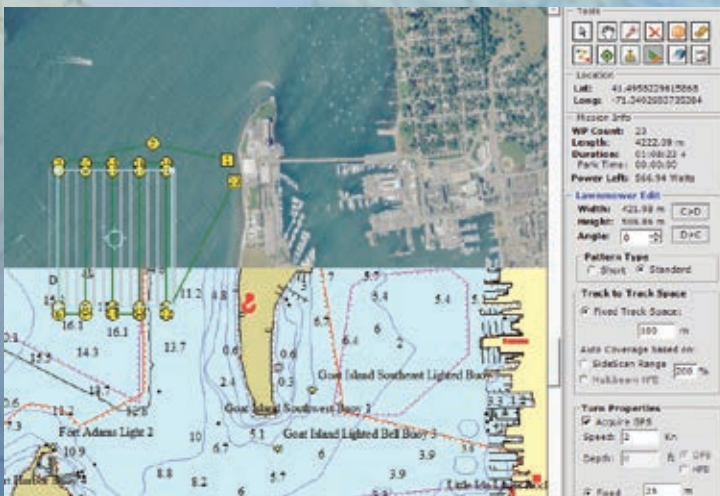
IVER3

Affordable Work Class Autonomous Underwater Vehicle (AUV)

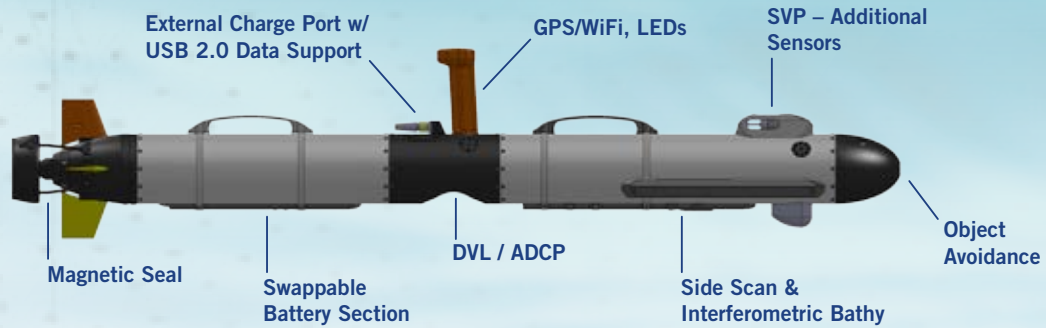
Extended OPERATION Time

Wide Variety of HIGH RESOLUTION SONAR Options

INTUITIVE Mission Planner



IVER3 AUV SPECIFICATIONS



STANDARD FEATURES (All Vehicle Models)

DIMENSIONS: Standard Length: 60-85 inches

TUBE DIAMETER: 5.8 inches

WEIGHT: 59-85 Lbs (standard vehicle)

DEPTH RATING: 100 meters

ENDURANCE: 8-14 hours at speed of 2.5 knots; configuration dependent

SPEED RANGE: 1-4 knots (0.5-2.0 m/s)

COMMUNICATION: Wireless 802.11n Ethernet standard (Iridium and Acomms optional)

ANTENNA MAST: Navigation Lights, with IR and Visible LEDs (programmable strobe)

TRACKING INTERNAL DATA LOG: Programmable resolution

NAVIGATION: Surface: GPS (WAAS corrected). **Subsurface:** RDI Doppler Velocity Log (DVL), 81M range, depth sensor and corrected compass

SOFTWARE

VECTOR MAP: Mission planning and data viewing

SONARMOSAIC: Creates GeoTiff images of side scan records and KMZ files for Google Earth

BATHYMOAIC: Creates GeoTiff images for bathymetry data

UNDERWATER VEHICLE CONSOLE (UVC): Operation, run mission, remote control

ENERGY: 800 WHrs of rechargeable Lithium-Ion batteries, (Swappable section)

ONBOARD ELECTRONICS: Intel Dual Core 1.6 GHz N2600 processor with MS Windows embedded; Up to 512 GB solid state drive for data storage

PROPULSION SYSTEM: 48V Servo Controlled DC Motor with 3-blade cast bronze propeller

CONTROL: Four independent control planes (Pitch/Yaw Fins)

CHARGING: 24V External Connector with USB 2.0 Support

OPTIONAL SENSORS & ACCESSORIES

SONAR SIDE SCAN

EDGETECH 2205: Dual frequency 400/900 kHz or 600/1600 kHz

L3 KLEIN UUV-3500: Dual frequency 455/900 kHz

TRITECH STARFISH: Single frequency 450 kHz

INTERFEROMETRIC CO-REGISTERED SONAR

EDGETECH 2205B: Swath bathymetry 600 kHz

L3 KLEIN UUV-3500B: Swath bathymetry 455 kHz

CT SENSOR: Conductivity & Temperature (NBOSI)

SVP SENSOR: Sound Velocity Probe (AML)

COMMUNICATIONS: Surface: 2.4 GHz telemetry radio for Handheld Remote; and/or Iridium with cloud based tracking software.

Subsurface: Acoustic modem: (Benthos or WHOI)

TOPSIDE DECK BOX: Surface equipment for subsurface comms with Benthos Acoustic Modem option

HANDHELD REMOTE CONTROLLER: Touch screen based remote with joystick for surface control (300 meter + range)

GO PRO BASED CAMERA SYSTEM: Still or Video; includes LED lighting & processing software

ACOUSTIC PINGER: Underwater locator beacon

RUGGED TRANSIT CASE: With custom foam inserts for Iver3, includes collapsible AUV field stand

MAGNETOMETER: Support for towed Marine Magnetics Explorer

INERTIAL NAVIGATION SYSTEM (INS): Consult factory for options

FIELD RUGGED OPERATOR CONSOLE: Getac for mission planning, operating and data viewing

GPS COMPASS STAND: High accuracy, land based AUV calibration tool

OBJECT AVOIDANCE SOUNDER: Imagenex 852 forward looking echo sounder in AUV bow

LAUNCH & RECOVERY DEVICE: Capture Cocoon

OTHER OPTIONS: Iver3 Spares Kit, Swappable battery section w/ tail



OceanServer Technology, Inc. | 151 Martine Street | Fall River, MA 02723 USA
508.678.0550 | sales@ocean-server.com | www.iver-auv.com